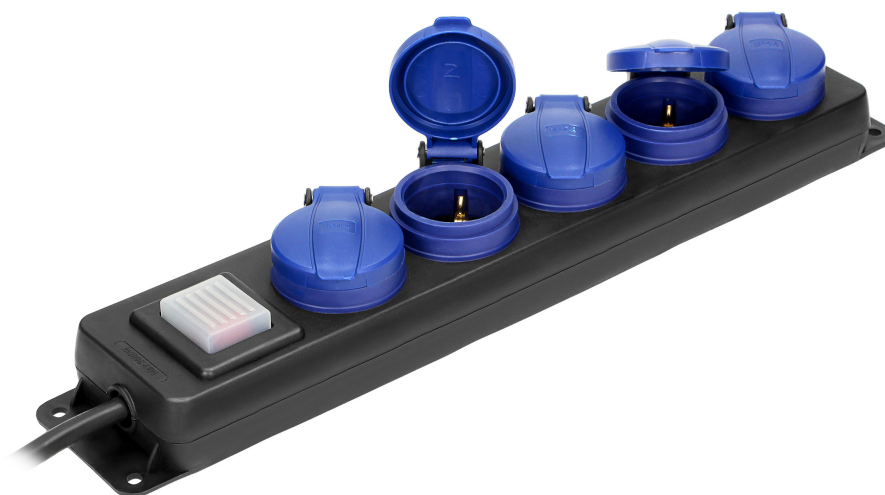


Heavy-duty, splash-proof extension sockets with central switch, 5 Schuko sockets 2P+E, IP44, rubber cord, H05RR-F 3x1.5mm<sup>2</sup>, 3m

**ORNO**

Marka: Orno | Symbol: OR-AE-13298(GS)/3M | Ean: 5908254847783



## PRODUCT DESCRIPTION

The splash-proof heavy-duty extension sockets with on/off switch is a solid and functional device designed for safe use in demanding conditions.

The unit is equipped with 5 Schuko-type mains sockets 2P+E which ensure safe connection of five different

devices and electrical appliances at the same time. It is designed to operate with a nominal voltage of 230V, 50Hz and a rated current of 16A and a maximum load of up to 3680W.

The sockets are equipped with safety shutters and protective covers, characteristic for the top-quality products of ORNO for PROFESSIONALS, which effectively protect against dirt and moisture. The IP44 rate means that the device may be used both indoors and outdoors.

The on/off switch provides easy power control. Additionally, the device is equipped with a hook that allows to conveniently attach it in a safe place as well as holes for permanent installation at the workplace, which increase functionality and stability of the unit.

The body is rectangular and made of solid plastic. It ensures durability and resistance to mechanical damage. The cable 3 m long has a cross-section of 3x1.5 mm<sup>2</sup> and H05RR-F insulation.

## TECHNICAL DATA

### General information:

Housing shape:	Prostokątny
Number of socket outlets with earth pin:	5
Socket type:	2P+Z
Standard socket:	Schuko (typ F)
Current path apertures:	Tak
With on/off switch:	Tak
Supply voltage [V]:	230
Frequency [Hz]:	50
Nominal current [A]:	16
Max. connected load [W]:	3680
Number of conductors:	3
Core cross section [mm <sup>2</sup> ]:	1.5
Cable type:	H05RR-F
Insulation type:	guma
Material:	Tworzywo sztuczne
Material quality:	Tworzywo termoplastyczne

Surface finishing:	Matowy
Colour:	Czarno-granatowy
Degree of protection (IP):	IP44
Length of power cord [m]:	3
Dimensions - width [mm]:	107
Dimensions - height [mm]:	415
Dimensions - depth [mm]:	79
Weight [kg]:	0,8