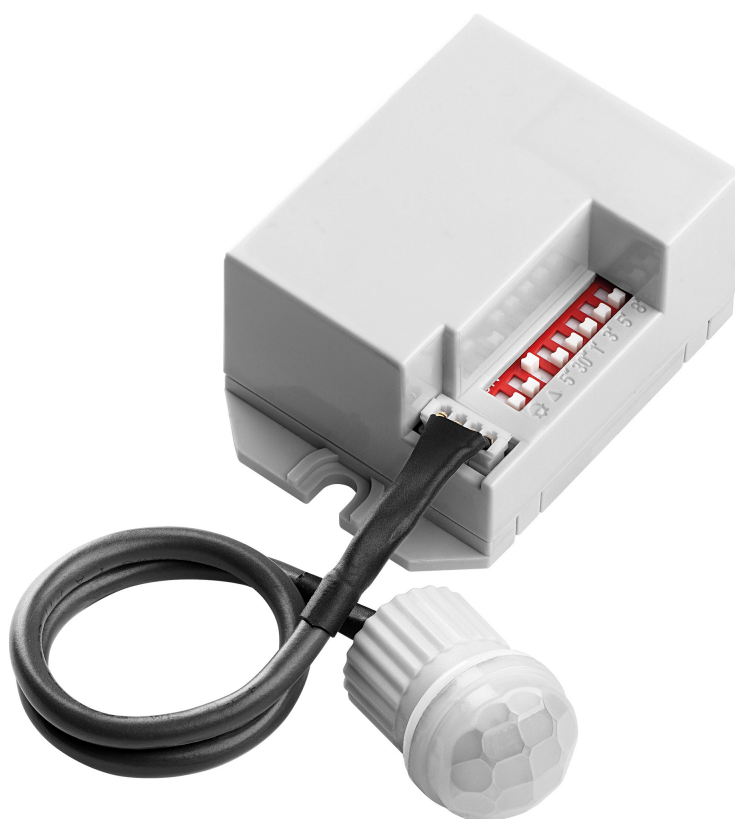


## PIR motion sensor 360° with external probe

Marka: Orno | Symbol: OR-CR-211/12-24V | Ean: 5902560327540

**ORNO**



### PRODUCT DESCRIPTION

Passive infrared sensor with external probe For indoor usage Collaborates with LED lighting Regulation: lighting time (TIME) and the sensitivity of the light intensity (LUX).

## TECHNICAL DATA

### General information:

Max. load:	60-120
Max. load of the LED light source:	60-120 W
Degree of protection (IP):	20
Relay output:	No
Nominal voltage:	12-24V
Presence detector:	No
Colour:	white
Installation:	surface mounting
Dimensions of the sensor - width (mm):	26 mm
Dimensions of the sensor - height (mm):	37 mm
Dimensions of the sensor - depth (mm):	56 mm
Working temperature:	-20~+40
Detection angle:	360°
Dimensions of the mounting hole:	Ø12 mm
Type of sensor:	Infrared
Detection range:	Ø3m lub Ø6m m
Adjustable daylight sensor (LUX):	Yes
Daylight sensor adjustment range (LUX):	10lux or 2000lux
Adjustable time setting (TIME):	Yes
Lighting time adjustment range (TIME):	5 sek., 30 sek., 1 min., 3 min., 5 min., 8 min.
Adjustment of motion detection range (SENS):	No

