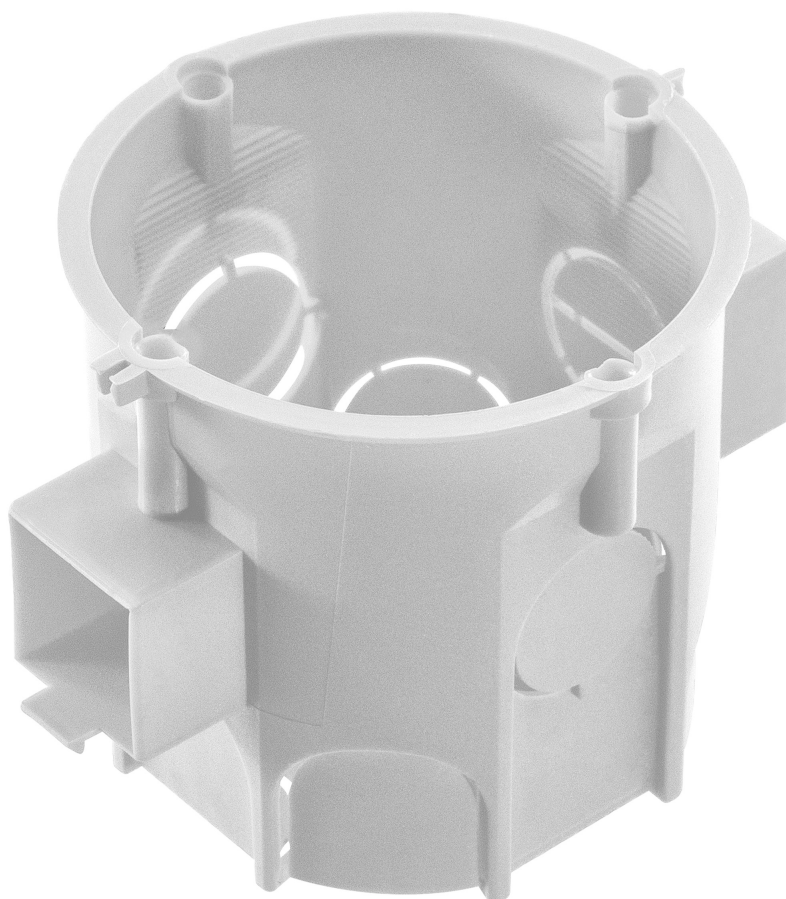


## Serial, flush-mounted junction box - 60 mm deep, white

Marka: Orno | Symbol: OR-JB-13818 | Ean: 5904988914616



### PRODUCT DESCRIPTION

The serial flush-mounted junction box is an electrical component designed for installation in walls to effectively secure electrical cable connections. It allows several boxes to be connected in series, which is useful when installing several sockets or switches next to each other.

Flush mounting renders the cable connections almost invisible, ensuring an aesthetically pleasing finish. Mounting with the help of screws or a strut (no mounting accessories included).

Equipped with 10 inlets on the back, the box provides easier and more secure installation and also allows for convenient cable routing. In addition, the product has a housing feed-through by break-out opening and housing feed-through by nozzle, making it suitable for pipes and cables 20 mm in diameter.

The product is made of plastic in white. It is round, 68 mm in diameter. An internal depth of 60 mm provides more space for cables, connectors and installation components.

## TECHNICAL DATA

### General information:

Mounting method:	Montaż podtynkowy
Shape:	Okrągły
Construction type:	Puszka elektroinstalacyjna
Model:	Pojedynczy
Provided with revolving ring:	Nie
Couplable:	Tak
Diameter [mm]:	63
Length [mm]:	63
Width [mm]:	84
Depth [mm]:	64
Inner depth [mm]:	62
Mounting switching equipment:	Śrubowy lub rozporowy
With screws:	Nie
Housing feed-through by break-out opening:	Tak
Housing feed-through by seal membrane:	Nie
Housing feed-through by nozzle:	Tak
Housing feed-through by step membrane:	Nie
For tube diameter:	20 mm
Suitable for cable diameter [mm]:	20 mm
Pipe locking:	Nie
Pipe locking optional:	Nie

Inlet from the rear:	Tak
Number of inlets:	10
Material:	Tworzywo sztuczne
Halogen free:	Tak
Surface protection:	Inne
Colour:	Biały
Degree of protection (IP):	IP30
Sealable:	Nie
With screening:	Nie
Air tight:	Nie
Clamp position fixed:	Nie
Luminaire hook mounting:	Nie
With partition panel:	Nie