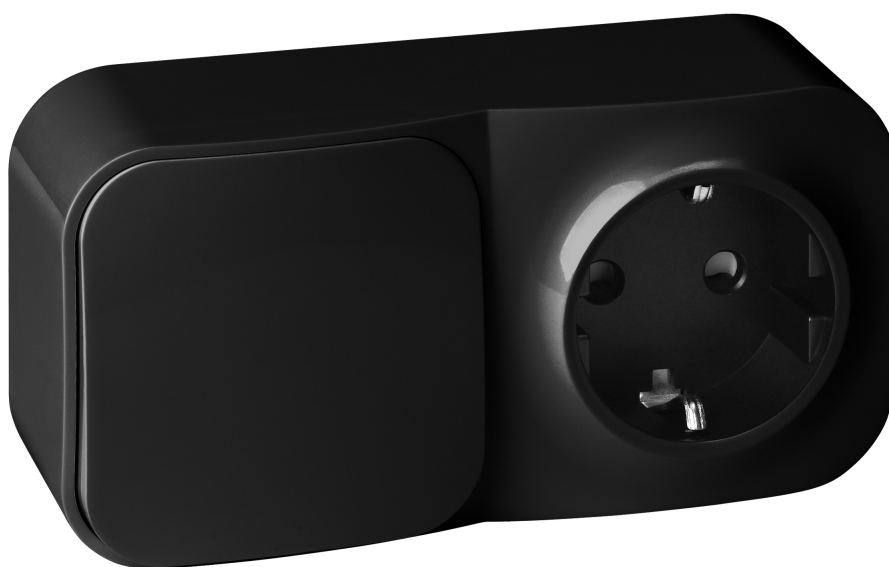


Surface-mounted single-pole switch + Single socket ToDo, IP20, 2P+E, Schuko, black

Marka: Orno | Symbol: OR-OE-7207(GS)/B | Ean: 5908254851858

ORNO

PRODUCT DESCRIPTION

ToDo series combines simple solutions suitable for domestic and professional use. It is a basic electrical equipment series applied in every building thanks to thought-out and simple design. You may use ToDo in service rooms and offices, but also in private residences or flats.

It is aesthetic and minimalistic. Premium quality materials ensure high resistance to UV radiation and mechanical damages.

A double equipment consisting of an integrated single-pole switch and a Schuko standard socket (2P+E). It is a convenient solution for small areas. Intended for indoor use (IP20). The product is designed for single-phase installations, with a rated voltage of 250V, 50Hz and a current of 16A.

It is surface mounted with the help of screws or double-sided tape. Screw terminals and safety shutters ensure durable and safe connection. The whole has been finished with a glossy black surface.

Dimensions: 128x66x43 mm.

The product is also available in white, in French standard and in packs of 10 pieces.

TECHNICAL DATA

General information:

Model:	Łącznik jednobiegunowy + Gniazdo ze stykiem ochronnym
Protective contact:	Blaszki uziemiające
Number of units:	2
Number of phases:	1
Connection type:	Zacisk śrubowy
Safety shutters:	Tak
Label space/information surface:	Nie
Colour:	Czarny
Mounting method:	Montaż natynkowy
Type of fastening:	Montaż śrubowy
Material:	Tworzywo sztuczne
Material quality:	Tworzywo termoplastyczne
Surface protection:	Stan surowy
Surface finishing:	Błyszczący
Nominal current [A]:	16
Nominal voltage [V]:	250
Frequency [Hz]:	50

Suitable for degree of protection (IP):	IP20
Device width [mm]:	128
Device height [mm]:	66
Device depth [mm]:	43