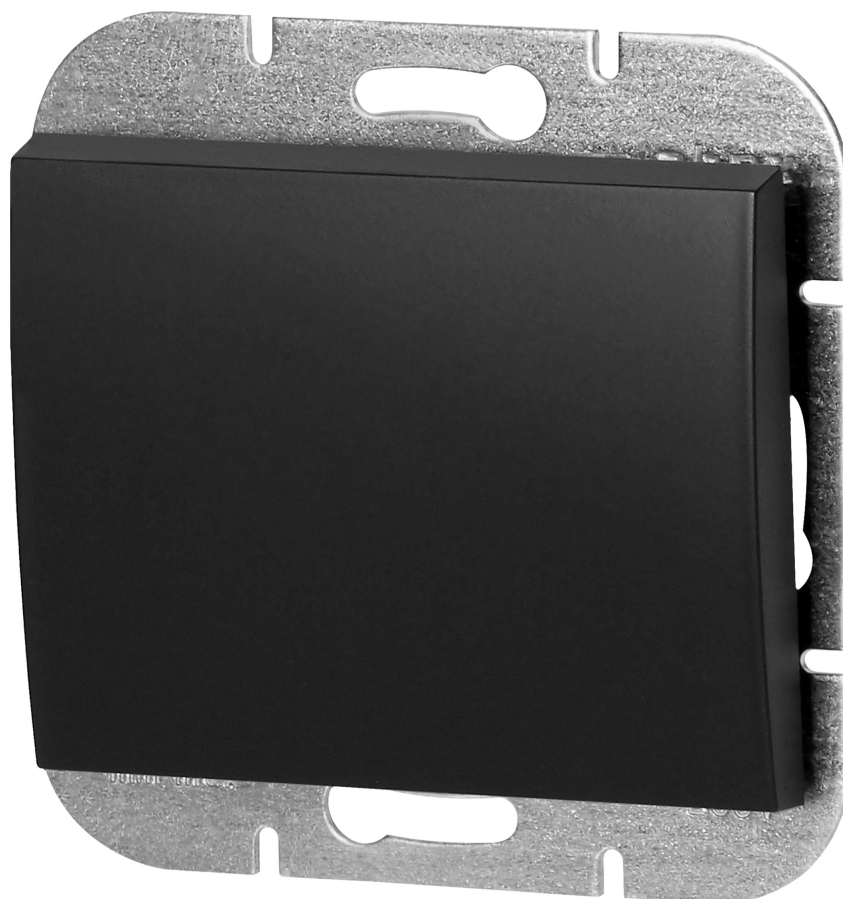


Flush-mounted single-pole switch Onyx, 10A, 250V, WP-1O, black

ORNO

Marka: Orno | Symbol: OR-OE-7500/B | Ean: 5904988910281



PRODUCT DESCRIPTION

Modular series with a frame plate system. A series of modern switches and sockets harmoniously blending with original designer interiors. The switches' modern quick-connect mechanism (wires are connected by pushing them directly into the body) provides secure and safe wire installation and removal. The sockets are equipped with traditional screw connections. The internal design of the terminals guarantees secure connection of wires from 0.75 mm² to 2.5 mm². Strong and robust mounting plate grid and special mounting elements enable stable and secure installation in the box.

The single-pole switch is adapted to flush mounting. It is the simplest basic switch which operates on a single circuit and to which, for example, a single lamp can be connected. However, the product can also control other devices in the environment. It should be used indoors (IP20).

The product is available in two colors: white and black. Dimensions 82x98x41mm.

TECHNICAL DATA

General information:

Wiring system:	Łącznik 1-biegunowy
Method of operation:	Przycisk wahadłowy
Assembly arrangement:	Element systemu modułowego do osprzętu elektroinstalacyjnego
Number of rockers:	1
Mounting method:	Montaż podtynkowy
Type of fastening:	Montaż pazurkowy / -śrubowy
Material:	Tworzywo sztuczne
Material quality:	Tworzywo termoplastyczne
Surface protection:	Malowanie
Surface finishing:	Matowy
Colour:	Czarny
Label space/information surface:	Nie
Suitable for degree of protection (IP):	IP20
Nominal voltage [V]:	250
Frequency [Hz]:	50
Rated current [A]:	10
Connection type:	Wtyk samozaciskowy
Device width [mm]:	98
Device height [mm]:	82
Device depth [mm]:	13
Built-in depth [mm]:	27

Min. depth of built-in installation box [mm]:

27

