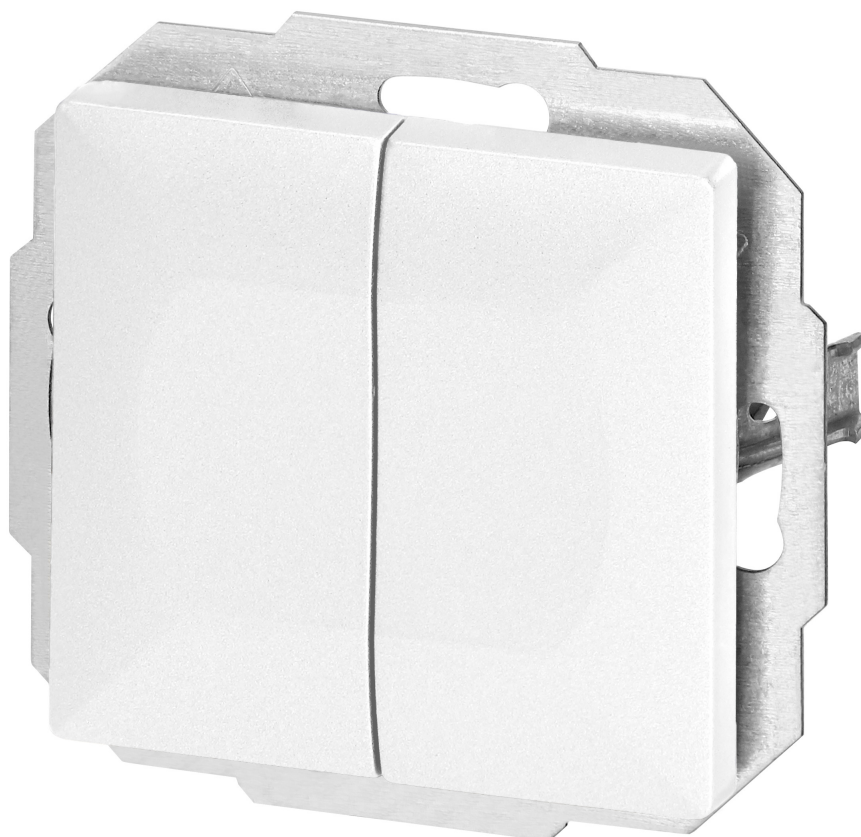


Flush-mounted double three-way switch Pearl, 10A, 250V, WP-2/5P, white

ORNO

Marka: Orno | Symbol: OR-OE-7702/2/W | Ean: 5904988910687



PRODUCT DESCRIPTION

Modular series with a symmetrical frame plate system (for 1-, 2-, 3-, 4-, 5-modules) allowing the product to be mounted in both horizontal and vertical positions. The modern quick-connect mechanism (wires are connected by pushing them directly into the body) provides secure and safe wire installation and removal. The sockets are equipped with traditional screw connections. The internal design of the terminals guarantees secure connection of wires from 0.75 mm² to 2.5 mm². Strong and robust mounting plate grid and high-quality self-retracting elements enable stable and secure installation in the box. Special springing elements facilitate

fitting the frame into the body.

The double three-way switch is adapted to flush mounting. Double switch will find application wherever there is a need to control two circuits independently. Product is used to switch on and off the circuit to which the stair lighting is connected. This type of switches are always installed in pairs. The function of this type of switch is to activate, for example, lighting from different locations or floors. Similarly, the lighting in the bedroom, which you turn on when you enter the room and want to turn off right next to the bed, can be realized without going back to the main switch. It should be used indoors (IP20).

The product is available in three colors: white, black and anthracite. Dimensions 81x81x41mm.

TECHNICAL DATA

General information:

Wiring system:	Łącznik schodowy podwójny
Method of operation:	Przycisk wahadłowy
Assembly arrangement:	Element systemu modułowego do osprzętu elektroinstalacyjnego
Number of rockers:	2
Mounting method:	Montaż podtynkowy
Type of fastening:	Montaż pazurkowy / -śrubowy
Material:	Tworzywo sztuczne
Material quality:	Tworzywo termoplastyczne
Surface protection:	Malowanie
Surface finishing:	Błyszczący
Colour:	Biały
Label space/information surface:	Nie
Suitable for degree of protection (IP):	IP20
Nominal voltage [V]:	250
Frequency [Hz]:	50
Rated current [A]:	10
Connection type:	Wtyk samozaciskowy

Device width [mm]:	81
Device height [mm]:	81
Device depth [mm]:	14
Built-in depth [mm]:	27
Min. depth of built-in installation box [mm]:	27



