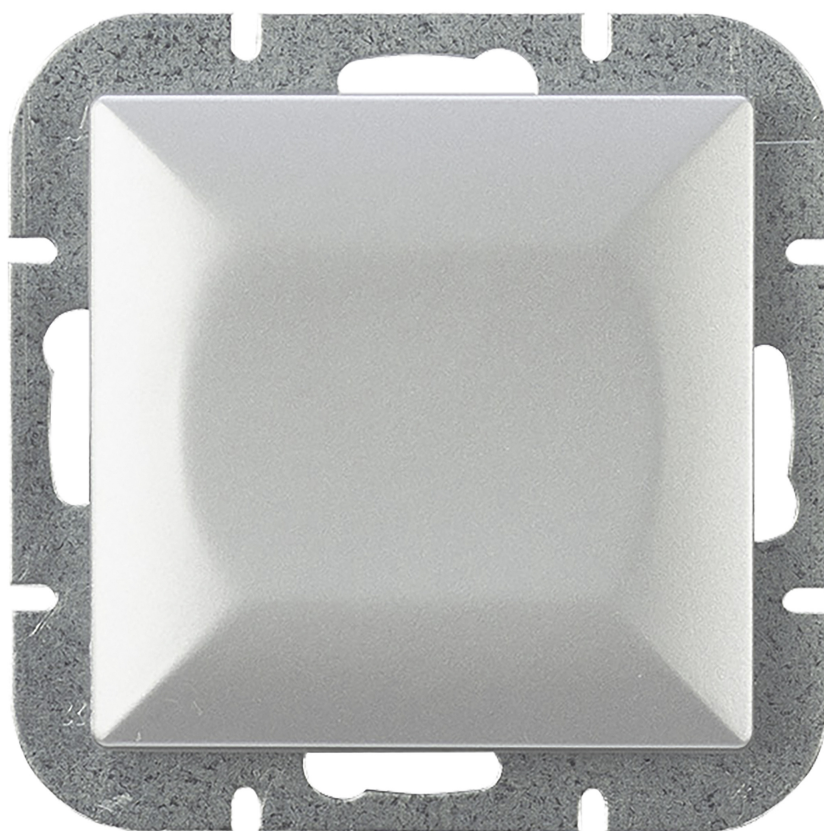


Flush-mounted four-way switch Pearl, 10A, 250V, WP-8P, silver

ORNO

Marka: Orno | Symbol: OR-OE-7703/G | Ean: 5904988915576



PRODUCT DESCRIPTION

Modular series with a symmetrical frame plate system (for 1-, 2-, 3-, 4-, 5-modules) allowing the product to be mounted in both horizontal and vertical positions. The modern quick-connect mechanism (wires are connected by pushing them directly into the body) provides secure and safe wire installation and removal. The sockets are equipped with traditional screw connections. The internal design of the terminals guarantees secure connection of wires from 0.75 mm² to 2.5 mm². Strong and robust mounting plate grid and high-quality self-retracting elements enable stable and secure installation in the box. Special springing elements facilitate

fitting the frame into the body.

The four-way switch is adapted to flush mounting. It is used to expand a circuit that uses three-way switches and allows you to control lighting from more locations. This product is especially useful for staircases and mezzanines. The switch is responsible for switching on and off the circuit to which the stair lighting, corridor lighting or others are connected. It should be used indoors (IP20).

The product is available in four colors: white, black, silver and anthracite. Dimensions 81x81x41mm.

TECHNICAL DATA

General information:

Wiring system:	Łącznik krzyżowy
Method of operation:	Przycisk wahadłowy
Assembly arrangement:	Element systemu modułowego do osprzętu elektroinstalacyjnego
Number of rockers:	1
Mounting method:	Montaż podtynkowy
Type of fastening:	Montaż pazurkowy / -śrubowy
Material:	Tworzywo sztuczne
Material quality:	Tworzywo termoplastyczne
Surface protection:	Malowanie
Colour:	Srebrny
Label space/information surface:	Nie
Suitable for degree of protection (IP):	IP20
Nominal voltage [V]:	250
Frequency [Hz]:	50
Rated current [A]:	10
Connection type:	Wtyk samozaciskowy
Device width [mm]:	81
Device height [mm]:	81
Device depth [mm]:	14

Built-in depth [mm]:	27
Min. depth of built-in installation box [mm]:	27