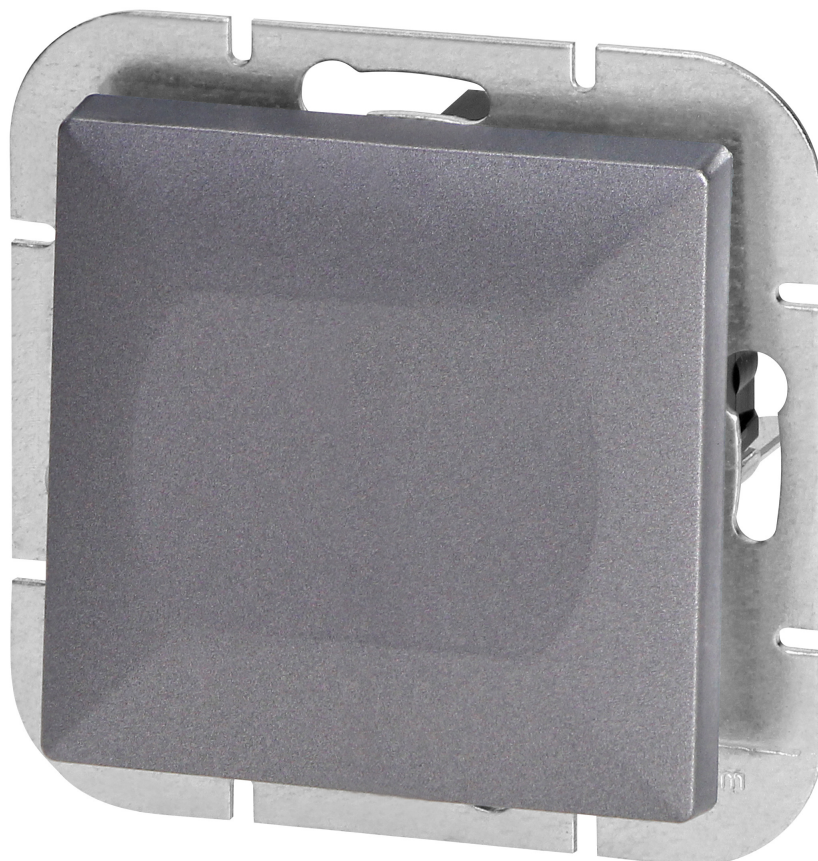


## Flush-mounted doorbell button Pearl, 10A, 250V, WP-6/7P, anthracite

Marka: Orno | Symbol: OR-OE-7704/A | Ean: 5904988910724

### PRODUCT DESCRIPTION

Modular series with a symmetrical frame plate system (for 1-, 2-, 3-, 4-, 5-modules) allowing the product to be mounted in both horizontal and vertical positions. The modern quick-connect mechanism (wires are connected by pushing them directly into the body) provides secure and safe wire installation and removal. The sockets are equipped with traditional screw connections. The internal design of the terminals guarantees secure connection of wires from 0.75 mm<sup>2</sup> to 2.5 mm<sup>2</sup>. Strong and robust mounting plate grid and high-quality self-retracting elements enable stable and secure installation in the box. Special springing elements facilitate

fitting the frame into the body.

The doorbell button adapted to flush mounting, designed to operate a doorbell. It is a type of switch whose function is to activate a bell or chime every time it is pressed. It should be used indoors (IP20).

The product is available in three colors: white, black and anthracite. Dimensions 81x81x41mm.

## TECHNICAL DATA

### General information:

<b>Wiring system:</b>	Styk zwierny (NO)
<b>Method of operation:</b>	Przycisk wahadłowy
<b>Assembly arrangement:</b>	Element systemu modułowego do osprzętu elektroinstalacyjnego
<b>Number of rockers:</b>	1
<b>Mounting method:</b>	Montaż podtynkowy
<b>Type of fastening:</b>	Montaż pazurkowy / -śrubowy
<b>Material:</b>	Tworzywo sztuczne
<b>Material quality:</b>	Tworzywo termoplastyczne
<b>Surface protection:</b>	Malowanie
<b>Surface finishing:</b>	Matowy
<b>Colour:</b>	Antracyt
<b>Label space/information surface:</b>	Nie
<b>Suitable for degree of protection (IP):</b>	IP20
<b>Nominal voltage [V]:</b>	250
<b>Frequency [Hz]:</b>	50
<b>Rated current [A]:</b>	10
<b>Connection type:</b>	Wtyk samozaciskowy
<b>Device width [mm]:</b>	81
<b>Device height [mm]:</b>	81
<b>Device depth [mm]:</b>	14

Built-in depth [mm]:	27
Min. depth of built-in installation box [mm]:	27

