

# VIRONE

OPERATING AND INSTALLATION INSTRUCTIONS

## VIDEO CAMERA

### VDP-61KV



## INTRODUCTION

Before the installation and use of the device, please read this operation manual carefully. In case of any problems with understanding the manual, please contact the seller from whom you bought the device. Installation and commissioning of the equipment by the customer are possible if the installer has basic knowledge of electrical systems and the use of proper tools. Nevertheless, the device installation by qualified personnel is recommended.

**The manufacturer is not liable for any damage that can result from improper installation or operation of the device. Performing repairs or modifications by the customer voids the warranty.**

Since the technical data is subject to continuous modification, the manufacturer reserves the right to modify product specifications or introduce other design solutions that do not impair product performance or usability.

Additional information on VIRONE products is available at: [www.support.virone.pl](http://www.support.virone.pl). Orno-Logistic Sp. z o.o. is not liable for consequences resulting from failure to comply with the recommendations found in this manual. Orno-Logistic Sp. z o.o. reserves the right to make changes to the instruction – current version can be downloaded from [www.support.virone.pl](http://www.support.virone.pl). Any rights to translate/construe and the copyright of this manual are reserved.

1. Disconnect the power supply before performing any activities.
2. Do not immerse the product in water or other liquids.
3. Do not operate the device with damaged housing.
4. Do not open or repair the device yourself.
5. Do not use the appliance for any other purpose than intended.



### WARNING

*It is forbidden to make connections to live equipment!*

*Failure to observe the above may result in permanent damage to the device.*

*Each household is a user of electrical and electronic equipment, and hence a potential producer of hazardous waste for humans and the environment, due to the presence of hazardous substances, mixtures and components in the equipment. On the other hand, used equipment is valuable material from which we can recover raw materials such as copper, tin, glass, iron and others.*

*The weee sign placed on the equipment, packaging or documents attached to it indicates the need for selective collection of waste electrical and electronic equipment. Products so marked, under penalty of fine, cannot be thrown into ordinary garbage along with other waste. The marking means at the same time that the equipment was placed on the market after August 13, 2005. It is the responsibility of the user to hand the used equipment to a designated collection point for proper processing. Used equipment can also be handed over to the seller, if one buys a new product in an amount not greater than the new purchased equipment of the same type. Information on the available collection system of waste electrical equipment can be found in the information desk of the store and in the municipal office or district office. Proper handling of used equipment prevents negative consequences for the environment and human health!*



07/2021

## TECHNICAL DATA

Camera sensor	CMOS camera (1/3 inch)
Viewing angle	Vertical 58,5°, Horizontal 110°
Resolution (horizontal)	960P
LED night light	IR diodes
Working temperature	-40 ~ +50 °C
Nominal voltage	15V DC standby : ≤30mA, working : ≤70mA
Type of card supported	13,56 MHz Mifare
Reading range	≤3 cm
Door release time	≤2s
Ingress protection	IP44

## EXTERNAL CAMERA

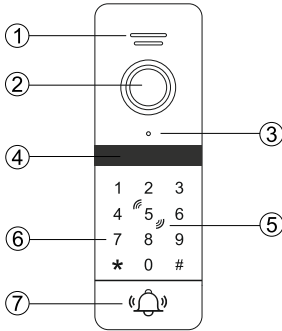


fig. 1

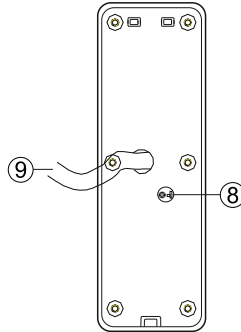


fig. 2

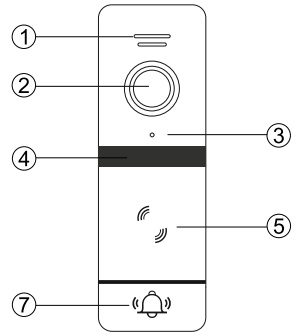


fig. 3

1	Loudspeaker
2	Camera
3	Microphone
4	Night lighting (IR diodes)
5	Proximity card and tag reader
6	Numeric keypad
7	Doorbell button
8	Volume adjustment
9	Cable

## Description

### 1. Operation

The device supports up to 200 cards/tags and 200 different PIN codes. Access can be obtained in 3 ways: by card, card or PIN, card + PIN.

### 2. Capacity

200 cards/tags, 200 PINs (assigned to cards/tags) and 1 access password (6 digits).

### 3. Restore factory settings

Disconnect the 15VDC power supply from the external cassette, then press and hold the exit button while restoring power. When you hear three "bi" signals, release the exit button (see wiring diagram - blue and grey wires). The factory settings are restored.

Factory master code: 999999, general access password: 123456.

Factory access method: card or PIN code.

Factory release time of electric door strike: 2s.

The emergency mode is deactivated at the factory.

In standby mode, the keypad buttons are softly backlit, but when the keypad is awakened it is more brightly illuminated. The doorbell button has constant bright backlighting.

When the device is in call, monitoring or motion detection mode, the bell button lights up red. When the electric door strike is released, the colour of the bell button illumination changes to green.

**Important: Restoring the factory settings does not delete all the stored data.**

#### **4. Operations with main card**

##### **1) Adding main card**

###### **Method 1**

Once the set is correctly connected, call the monitor from the external cassette by briefly pressing the bell button. Answer the call on the monitor and open the electric door strike. While the electric door strike is open the backlight of the bell button will change to green. When the bell button is green, touch and hold it for approx. 3 seconds until the device emits 3 beeps and the keypad backlight starts flashing. Read the first card (two beeps) and the second card (one beep). The first card has been assigned as the add main card (ADD), while the second card has been assigned as the delete main card (DEL). Once the cards have been programmed, the device automatically exits programming mode (keypad backlight stops flashing).

###### **Method 2**

From the keypad on the external cassette, enter programming mode \* Master code # (factory \* 999 999 #), the device will sound two beeps and the keypad backlight will flash slowly. Then touch button 6 and confirm with # (two beeps sound and the keypad backlight starts flashing faster). Read the first card (two beeps) and the second card (two beeps). Exit programming mode with the \* button (keypad backlight stops flashing). The first card has been assigned as the main add card (ADD) and the second as the main delete card (DEL).

**\* Master code #**

**6 #**

**read two cards (they will be assigned as ADD and DEL)**

**\***

**Important:** Master cards can normally be used to open the electric door strike. If you lose one of your master cards, you must program new ones (follow the whole process described above). After programming the new cards, the lost card will be deleted from the device memory.

##### **2) Adding user cards**

Within 10 sec. read the ADD main card 3 times (the first two readings will be followed by two beeps and the electric door strike will open, the third reading will be followed by three beeps and the keypad backlight starts flashing). Read the card you wish to add (two beeps) and exit the programming mode by reading the ADD main card (the keypad will stop flashing).

##### **3) Deleting user cards**

Within 10 sec. read the main DEL card 3 times (the first two readings will be followed by two beeps and the electric door strike will open, the third one will be followed by three beeps and the keypad backlight starts flashing). Read the card you wish to remove (two beeps) and exit the programming mode by reading the DEL main card (the keypad will stop flashing).

#### **5. Keypad operation**

Factory Master Code: **999 999**

Factory general password: **123 456**

**IMPORTANT: All operations must be carried out in programming mode, \* master code #.**

To enter programming mode enter \* master code # you will hear two beeps and the keypad backlight will flash. Acceptance of a command is indicated by two beeps and rejection is indicated by four beeps. To exit programming mode select \* the keypad backlight will stop flashing. The device will automatically exit from the programming mode if there are no commands for 30 seconds.

### **1) Master code change, general password and factory reset**

Master code: enter the programming mode by entering \* old Master code # then select 0 (the keypad backlight starts flashing faster) 77 and confirm # (one beep). Enter new master code (6 marks) # repeat new Master code and confirm # (two beeps). You can exit programming mode \*.

General password: enter the programming mode by entering \* Master code # then select 0 (the keypad backlight starts flashing faster) 11 and confirm # (one beep). Enter new general password (6 marks) # repeat new general password # (two beeps). You can exit programming mode \*.

Restore factory settings:

**IMPORTANT:** procedure resets the master code and the general access password.

Enter the programming mode by entering \* Master code # then select 0 (the keypad backlight starts flashing faster) 99 and confirm # (one beep). You can exit programming mode \*.

### **2) Adding proximity cards/tags**

Enter the programming mode by entering \* Master code # then select 1 (the keypad backlight starts flashing faster). Select the user sequence number from 000 to 199 and confirm # read the card/tag (two beeps). You can leave the programming mode by pressing \*\*.

### **3) Deleting cards/tags**

#### **Method 1**

Enter the programming mode by entering \* Master code # then select 2 (the keypad backlight starts flashing faster). Select the user sequence number under which the card/tag has been assigned (from 000 to 199) and confirm # (three beeps). You can leave the programming mode by pressing \*\*.

#### **Method 2**

Enter the programming mode by entering \*Master code #, then select 2 (the keypad backlight starts flashing faster). Then read the card/tag you wish to remove (two beeps) and confirm pressing # (four beeps). You can leave the programming mode by pressing \*\*.

#### **Method 3**

**WARNING: the procedure deletes all users!**

Enter the programming mode by entering \* Master code #, then select 2 (the keypad backlight starts flashing faster) 88 and confirm # (seven beeps). You can leave the programming mode by pressing \*\*.

### **4) Changing operating mode**

#### **Cards/tags only**

Enter the programming mode by entering \* Master code #, next 300 and confirm # (two beeps). You can leave the programming mode by pressing \*\*.

#### **Cards/tags or PIN code**

Enter the programming mode by entering \* Master code #, next 301 and confirm # (two beeps). You can leave the programming mode by pressing \*\*.

#### **Cards/tags and PIN code**

Enter the programming mode by entering \* Master code #, next 302 and confirm # (two beeps). You can leave the programming mode by pressing \*\*.

### **5) Changing the opening time of an electric door strike**

Enter the programming mode by entering \* Master code #, select 4 (the keypad backlight starts flashing faster). Enter new opening time from 00 to 99 and confirm # (two beeps). You can leave the programming mode by pressing \*\*.

**WARNING: If you set the time 00, the device will go into bistable mode!**

## 6) Edit safety functions

### *Deactivation of alarm and keypad / proximity reader lock*

Enter the programming mode by entering \* Master code #, next 5 (the keypad backlight starts flashing faster) 00 and confirm # (two beeps). You can exit programming mode \*.

### *Activation of keypad / proximity reader lock*

Enter the programming mode by entering \* Master code #, next 5 (the keypad backlight starts flashing faster) 01 and confirm # (two beeps). You can exit programming mode \*.

### *Activation of alarm and keypad / proximity reader lock*

Enter the programming mode by entering \* Master code #, next 5 (the keypad backlight starts flashing faster) 02 and confirm # (two beeps). You can exit programming mode \*.

**Lockout mode** means that if an invalid card/tag is repeatedly approached within 5 minutes or 10 incorrect passwords are entered, the device will lockout for 2 minutes, the keypad backlight will flash and the connection to the monitor will automatically be established. During the lockout, the device does not read cards/tags and does not respond to dialing keys on the keypad with the exception of the bell button.

**Alarm mode** means that if an invalid card/tag is repeatedly approached within 5 minutes or 10 incorrect passwords are entered, the device will lock itself for 1 minute, the keypad backlight will flash and a connection to the monitor will automatically be established. During the lockout, the device does not read cards/tags and does not respond to dialing keys on the keypad with the exception of the bell button.

## 6. User operation of the device

**Important: the following operations must be carried out outside of the programming mode!**

### ***Assigning/changing the PIN to a card/tag***

Select \* and read the card/tag to which the PIN code will be assigned. Then enter the old PIN code (factory: 0000) and accept # (you will hear two beeps and the button backlight will flash). Enter new PIN code (4 marks) # repeat new PIN code and confirm # (you will hear a single beep and the button backlight stops flashing).

### ***Opening the electric door strike with card/tag (operating modes 300 and 301)***

Insert a valid card/tag into the reader on the cassette.

### ***Opening the electric door strike with card/tag or passwords (operating mode 301)***

Insert a valid card/tag into the reader on the cassette or enter a PIN code or general access password on its keypad and accept #.

### ***Opening the electric door strike with card/tag and passwords (operating mode 302)***

Insert a valid card/tag into the reader on the cassette, then enter the PIN code on its keypad and accept #.

## WIRING DIAGRAM

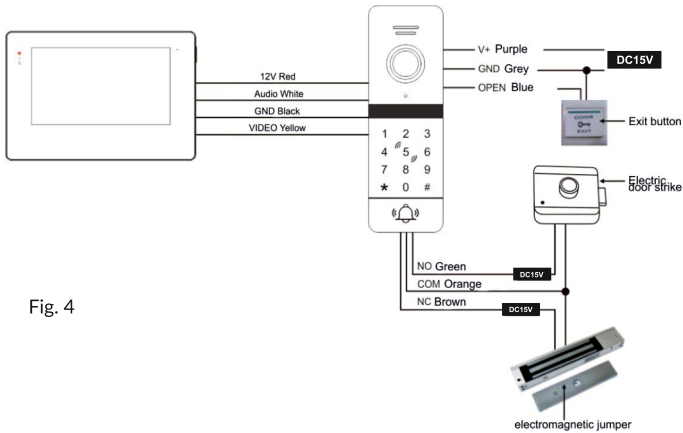
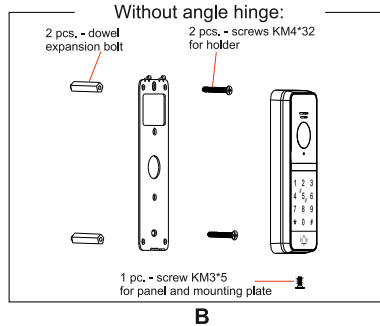
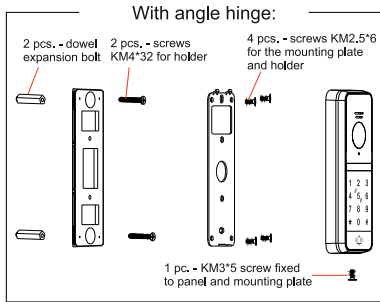


Fig. 4

## INSTALLATION

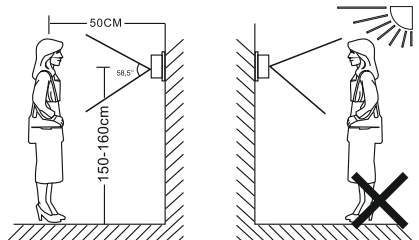


## EXTERNAL PANEL INSTALLATION



### Installation notes:

Do not install the device close to sources of strong radiation, e.g. hoists and other drive systems powered by alternating current. Installation should only be carried out by a qualified technician. Avoid bumping, shaking or colliding other objects with the unit as this may damage the internal components of the cassette.



Do not install the outdoor unit in a location where it may be exposed to direct sunlight (overexposed camera lens). Do not install the outdoor unit in a location with harsh weather conditions such as: strong sunlight, rain, high temperature, high humidity, high dust, corrosive chemicals. The device should be mounted in a location and position that best suits eye level. Turn off the power before installing the device. Keep a distance of at least 30 cm from the nearest AC powered device to avoid possible interference.

Factory Master code: **999 999**  
 Factory general password: **123 456**

QUICK PROGRAMMING GUIDE	
FUNCTION	PROCEDURE
Entry into programming mode	<b>* Master code#</b> (two beeps keypad backlight flashes)
Exit from programming mode	<b>**</b> (keypad has permanent backlighting)
Master code change (6-digits)	<b>* Master code#</b> <b>077</b> and confirm# (one beep), Enter <b>new password#</b> , repeat <b>new password</b> and confirm# Exit programming mode <b>**</b>
General password change (6-digits)	<b>* Master code#</b> <b>011</b> and confirm# (one beep), Enter <b>new password#</b> , repeat <b>new password</b> and confirm# Exit programming mode <b>**</b>
Assigning PIN code to card/tag (4-digits, only works in 301 and 302 operating mode)	<b>*</b> bring the card/tag close to the reader and enter <b>0000</b> (two beeps), Enter <b>new PIN code#</b> repeat PIN code#
Adding cards/tags	<b>* Master code#</b> <b>1</b> , enter the sequence number from 000 to 199 and confirm# (two beeps), bring the card/tag close to the reader and confirm# (four beeps), Exit programming mode <b>**</b>
Deleting cards/tags (method 1)	<b>* Master code#</b> <b>2</b> , bring the card/tag close to the reader and confirm# (four beeps), Exit programming mode <b>**</b>
Deleting cards/tags (method 2)	<b>* Master code#</b> <b>2</b> , Enter the (3-digit) sequence number of the card/tag and confirm# (three beeps), Exit programming mode <b>**</b>
Deleting all users cards/tags	<b>* Master code#</b> <b>288</b> and confirm# (seven beeps), Exit programming mode <b>**</b>
Changing the opening time of an electric door strike	<b>* Master code#</b> <b>4</b> and <b>01-99</b> (in seconds) and confirm# (two beeps), Exit programming mode <b>**</b>
Operation mode: card/tags only	<b>* Master code#</b> <b>300</b> and confirm# (two beeps), Exit programming mode <b>**</b>
Operation mode: cards/tags or PIN code (4 digits)	<b>* Master code#</b> <b>301</b> and confirm# (two beeps), Exit programming mode <b>**</b>
Operation mode: cards/tags and PIN code (4 digits)	<b>* Master code#</b> <b>302</b> and confirm# (two beeps), Exit programming mode <b>**</b>
Activation of bistable mode	<b>* Master code#</b> <b>400</b> and confirm# (two beeps), Exit programming mode <b>**</b>
Activation of monostable mode (timer)	<b>* Master code#</b> <b>4</b>   <b>01-99</b> (in seconds) and confirm# (two beeps), Exit programming mode <b>**</b>
Activation of the keypad lock (after unsuccessful entry several times)	<b>* Master code#</b> <b>501</b> and confirm# (two beeps), Exit programming mode <b>**</b>
Alarm and keypad lock activation (after unsuccessful entry several times)	<b>* Master code#</b> <b>502</b> and confirm# (two beeps), Exit programming mode <b>**</b>
Alarm/lock deactivation	<b>* Master code#</b> <b>500</b> and confirm# (two beeps), Exit programming mode <b>**</b>
Resetting to factory settings (master code and general password)	<b>* Master code#</b> <b>099</b> and confirm# (one beep), Exit programming mode <b>**</b>

**ORNO-LOGISTIC Sp. z o.o.**

ul. Rolników 437, 44-141 Gliwice tel. 32 43 43 110, [www.orno.pl](http://www.orno.pl)